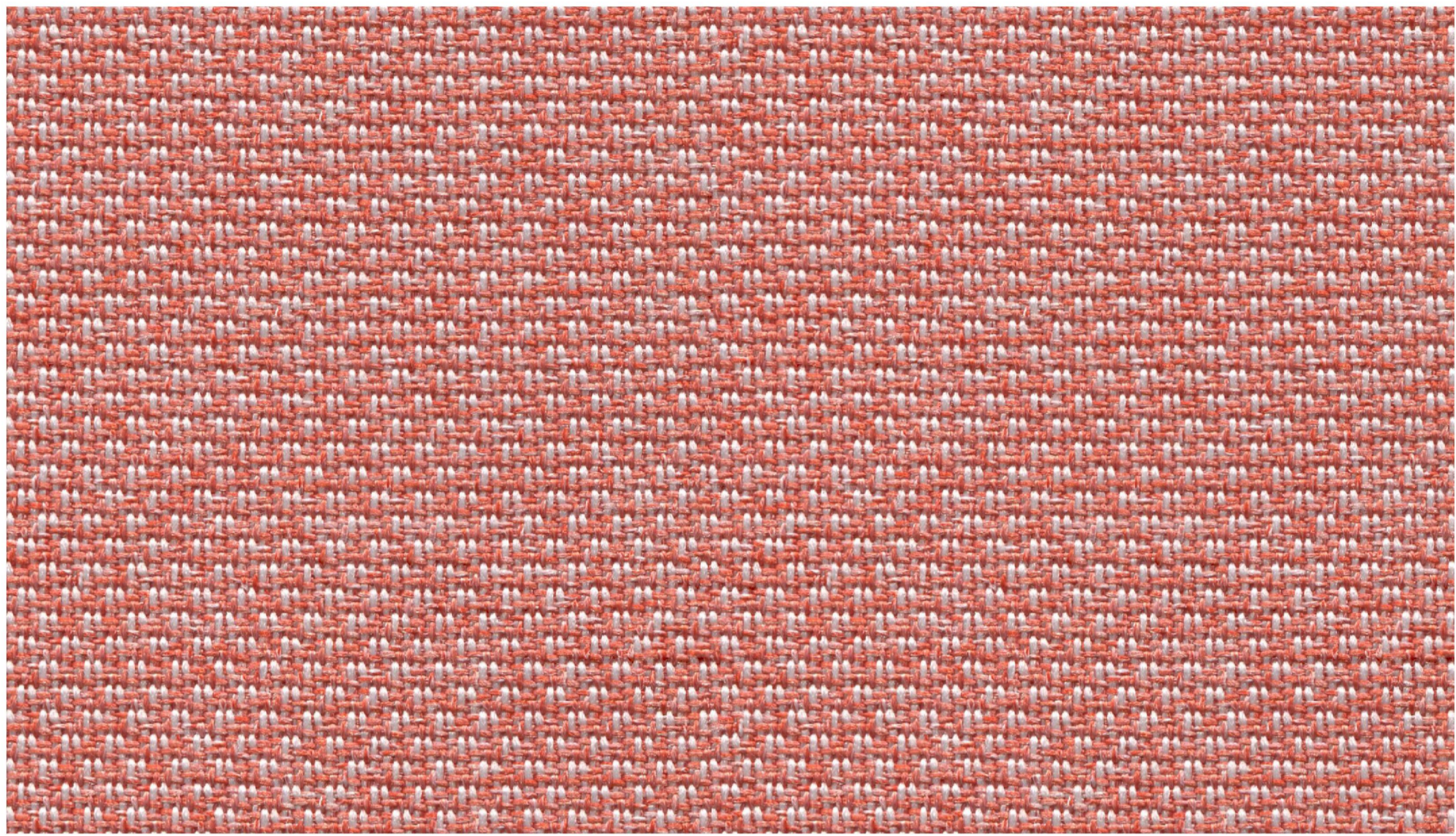
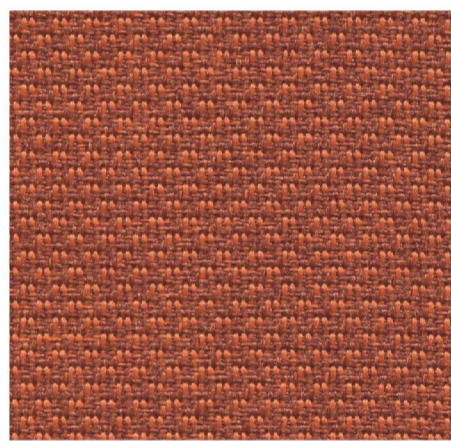


HY2183-01

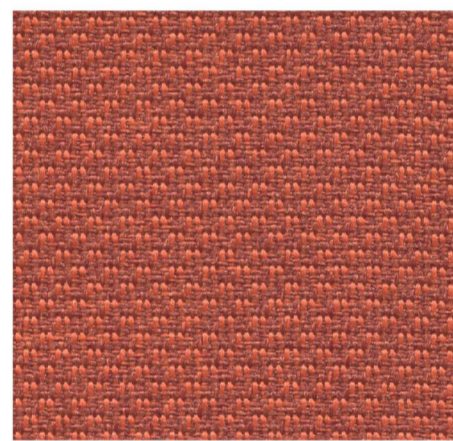
BY HOAU BROTHER



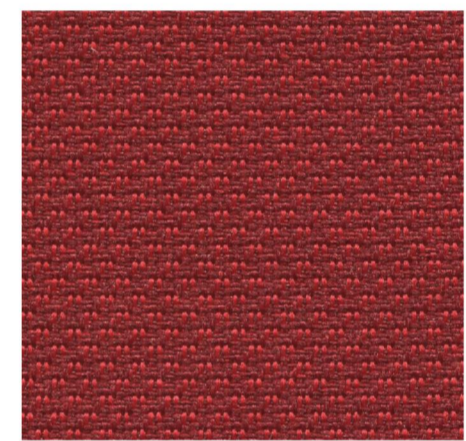
HY2183-01



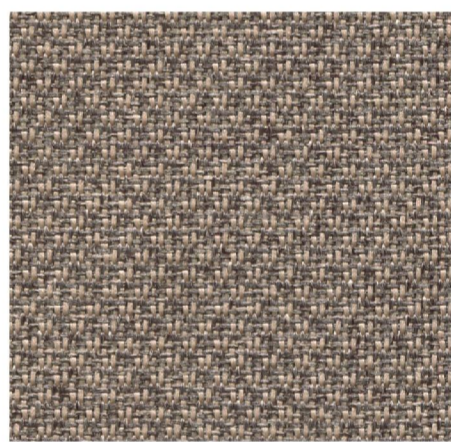
HY2183-02



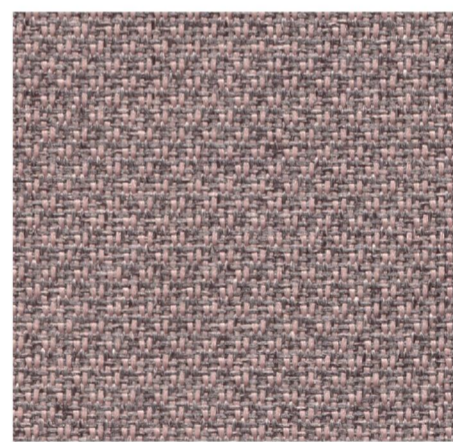
HY2183-03



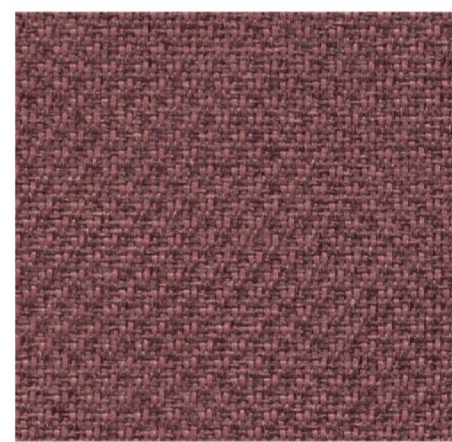
HY2183-04



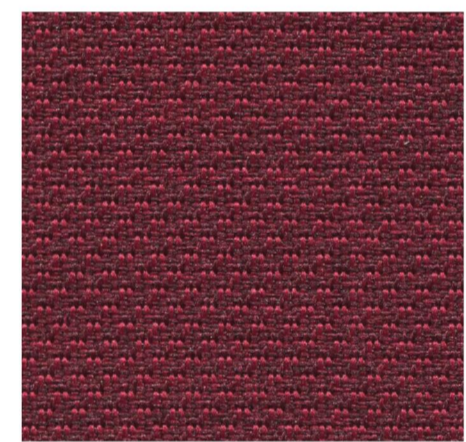
HY2183-08



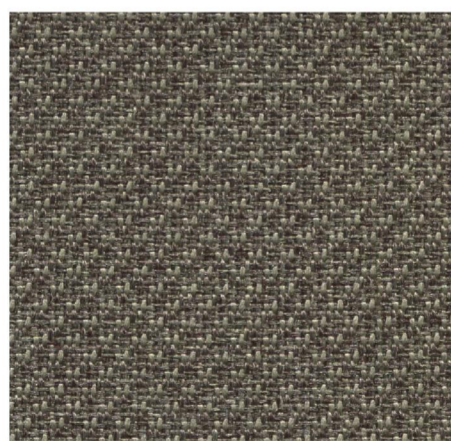
HY2183-07



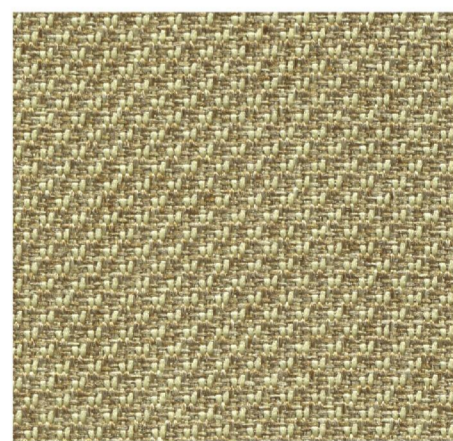
HY2183-06



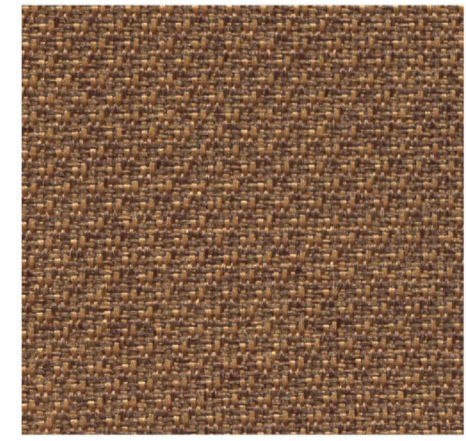
HY2183-05



HY2183-09



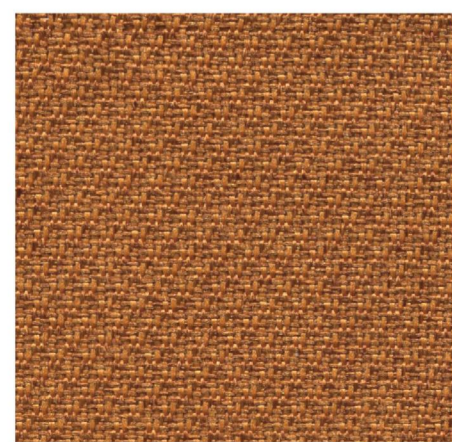
HY2183-10



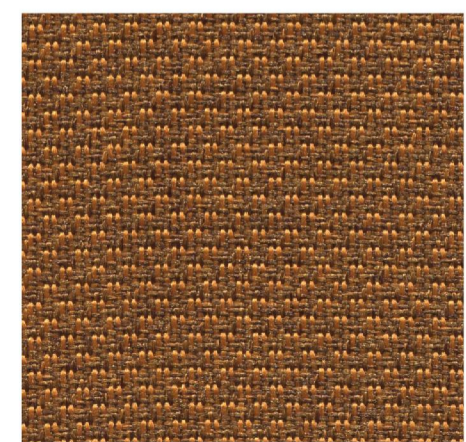
HY2183-11



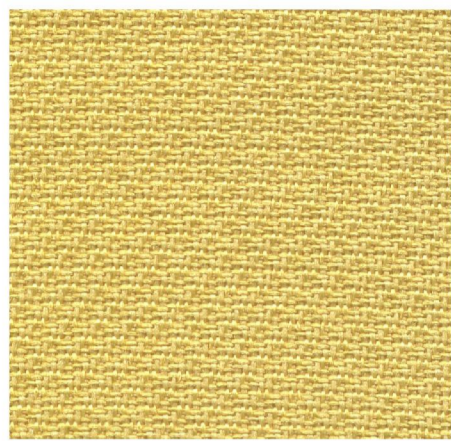
HY2183-14



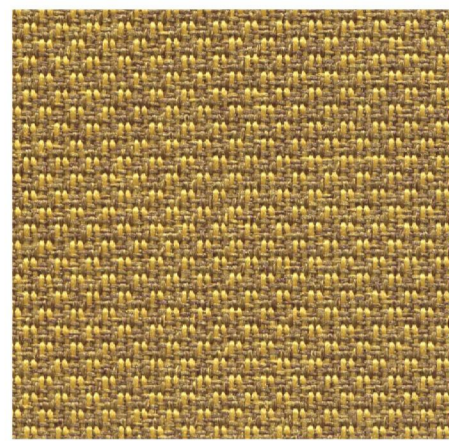
HY2183-13



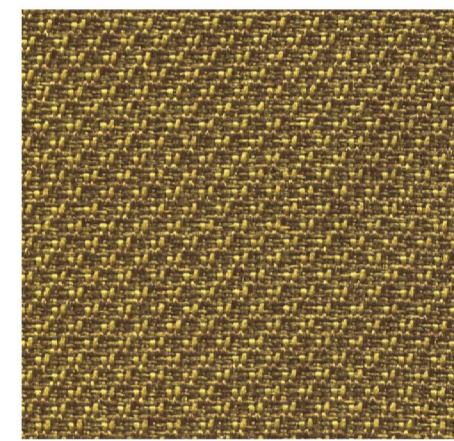
HY2183-12



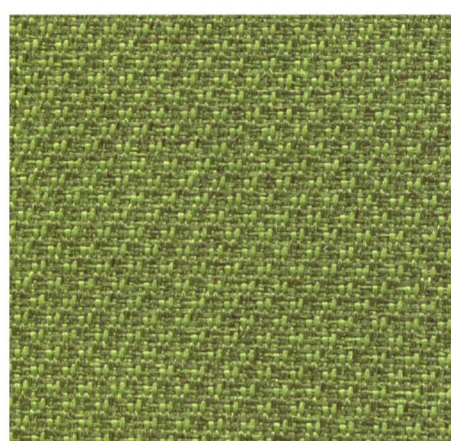
HY2183-15



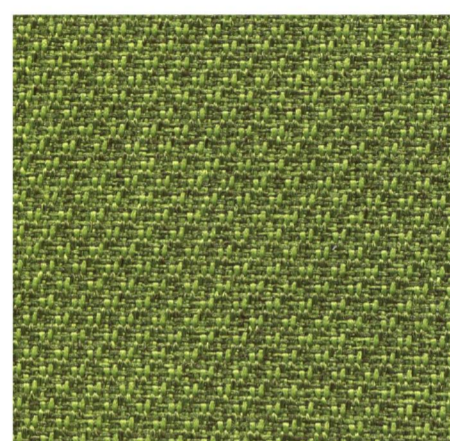
HY2183-16



HY2183-17



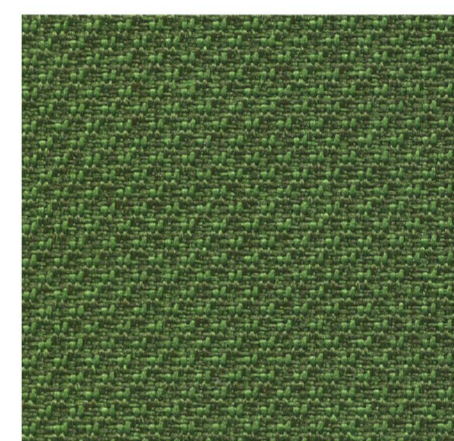
HY2183-18



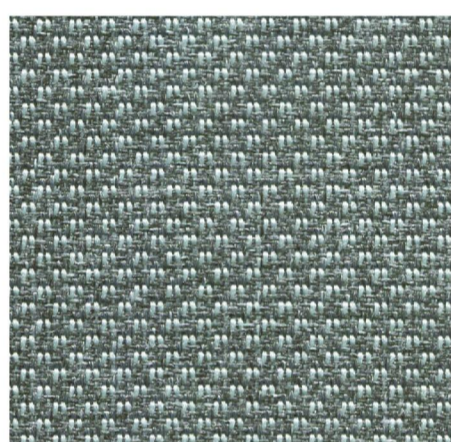
HY2183-19



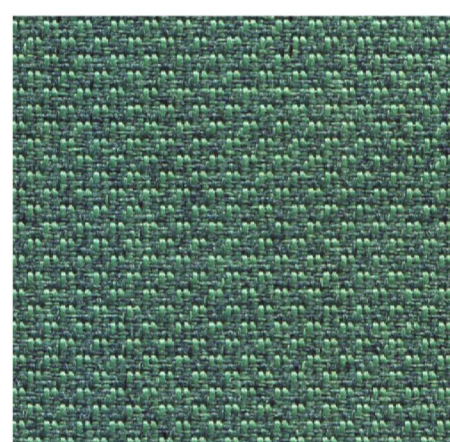
HY2183-20



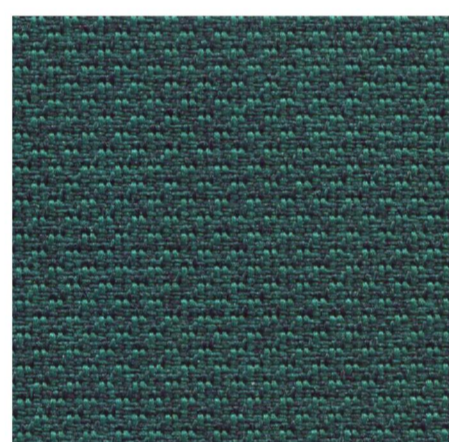
HY2183-21



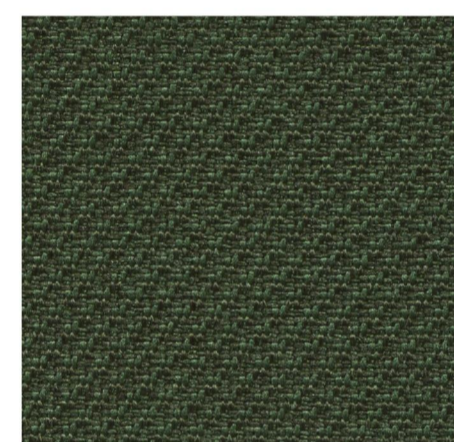
HY2183-41



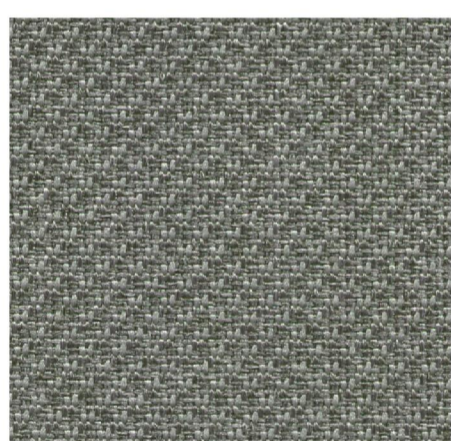
HY2183-39



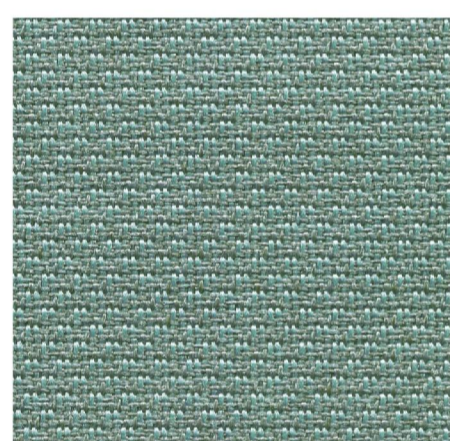
HY2183-38



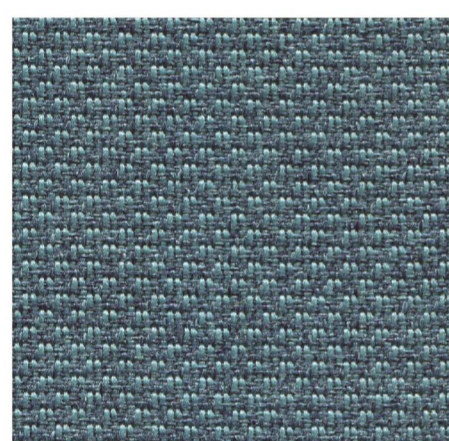
HY2183-22



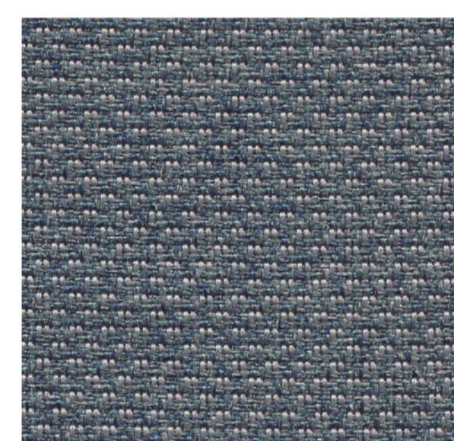
HY2183-42



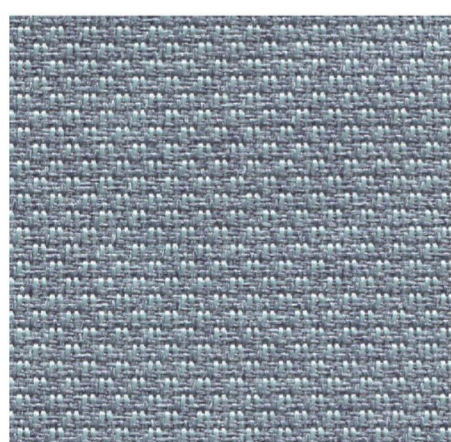
HY2183-40



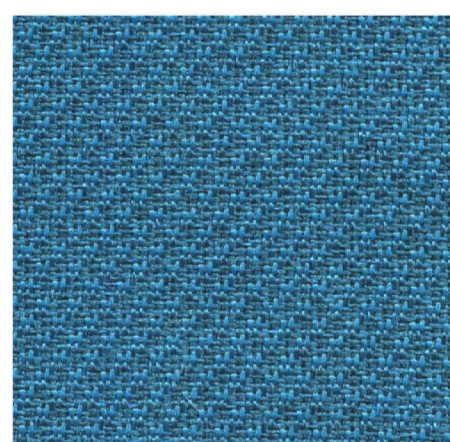
HY2183-44



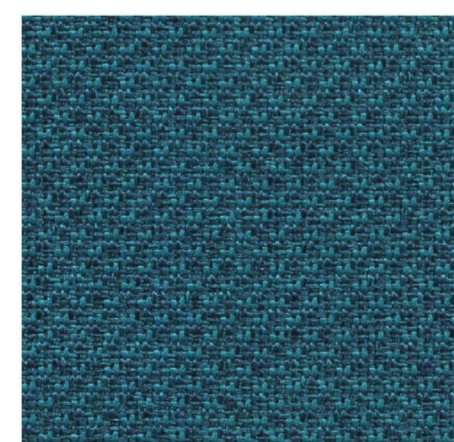
HY2183-43



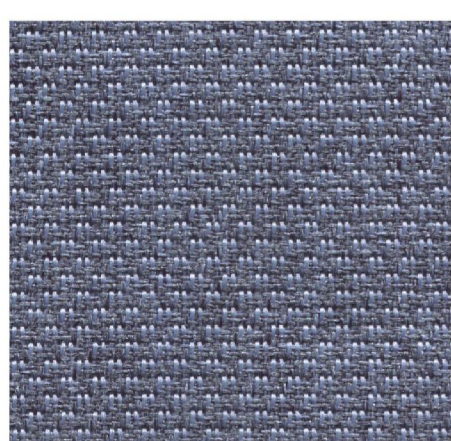
HY2183-34



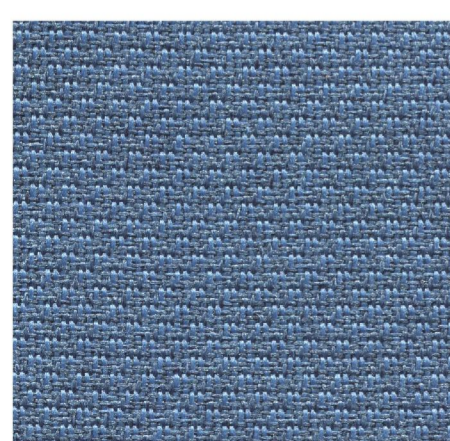
HY2183-36



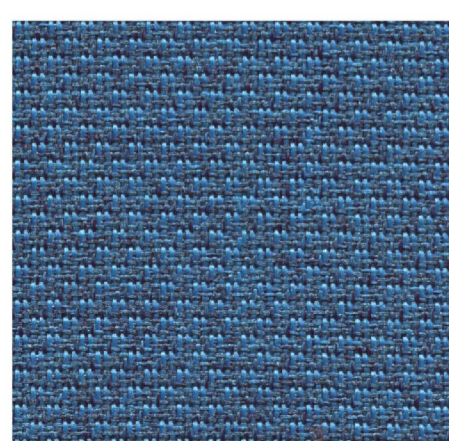
HY2183-37



HY2183-33



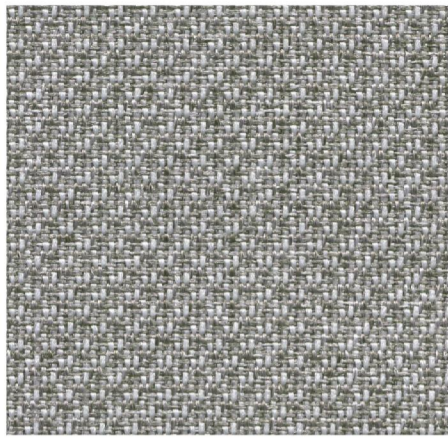
HY2183-35



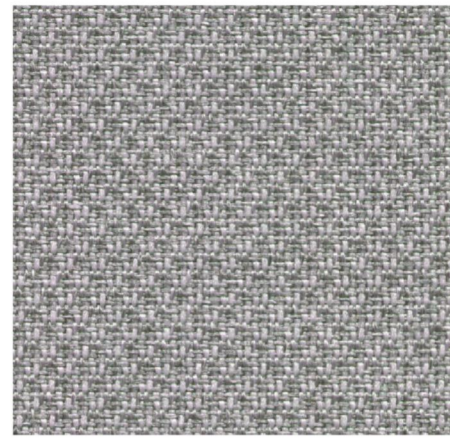
HY2183-32



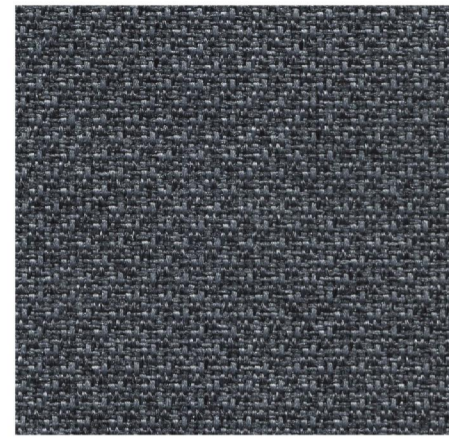
HY2183-31



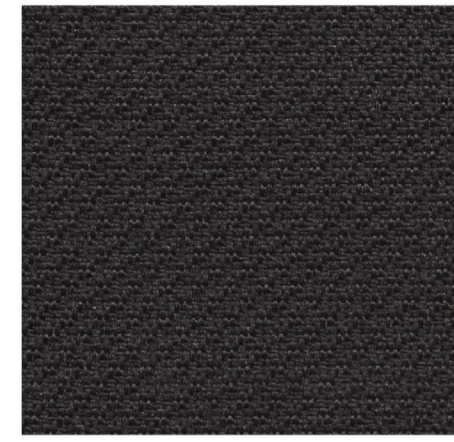
HY2183-25



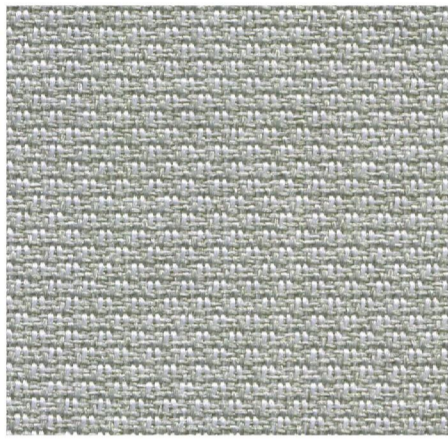
HY2183-24



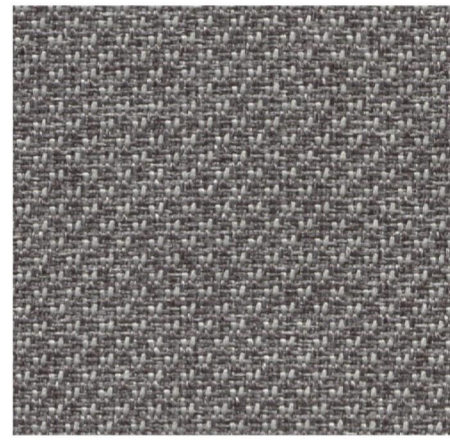
HY2183-28



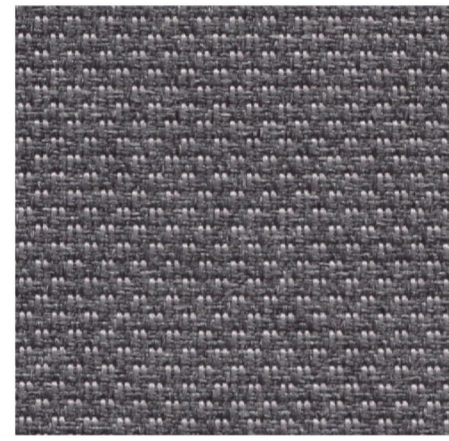
HY2183-30



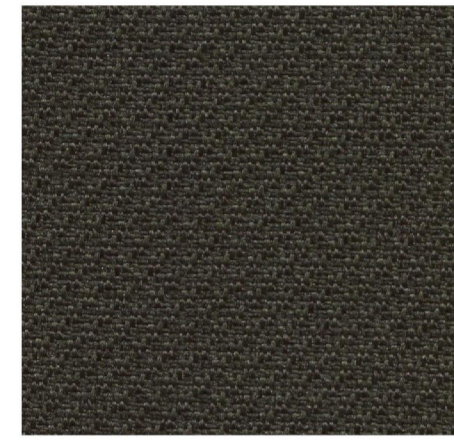
HY2183-23



HY2183-26



HY2183-27



HY2183-29

技术检测 (Tec.)	检测标准 (TS.)	项目 (Unit.)	测试结果 (Test Result)
耐水色牢度 (CFTW.)	AATCC107:2002	污染-Srain 褪色-Fading	Grade 4
	GB/T5713-1997	污染-Srain 褪色-Fading	等级 4
耐汗色牢度 (CFTP.)	AATCC15:2002	污染-Srain 褪色-Fading	Grade 4
	GB/T3922-1997	污染-Srain 褪色-Fading	等级 4
耐洗色牢度 (CFTW.)	ISO 105-C03:1989	污染-Srain 褪色-Fading	Grade 4
	GB/T3921.3-1997	污染-Srain 褪色-Fading	等级 4
干湿摩擦色牢度 (CFTR.)	AATCC8:2002	干-Dry 湿-Wet	Grade 4
	GB/T3920-1997	干-Dry 湿-Wet	等级 4
抗摩擦坚牢度 (Ab.Re)	ASTM D4966-98 Martindale 12Kpa		rubs 50000转

colour 44

材质(Comp): 70%涤纶(PET)+30%阳离子(CDP)

克重(Weight): 270gsm

幅宽(Width): 155cm

备注: 我司面料未含阻燃, 阻燃需外加工.



Company Information

Contact

(Phone)	0757-23870666 23636258
(Fax)	0757-23875234 23873536
(E-mail)	xiaowensu@hoaubrother.com
(Web)	www.hoaubrother.com
(Add)	顺德·龙江 精美路18号世博汇A座4楼(华宇总部) 亚洲国际A区一排29-32号(华宇旗舰店) No. 29-32, A area, Asia international materials city, Long Jiang, Shunde, Foshan, Guangdong, China, Post Code 528318

— HOAU BROTHER —



扫描二维码, 关注华宇兄弟

• 产品数据为真实检测数据 •